

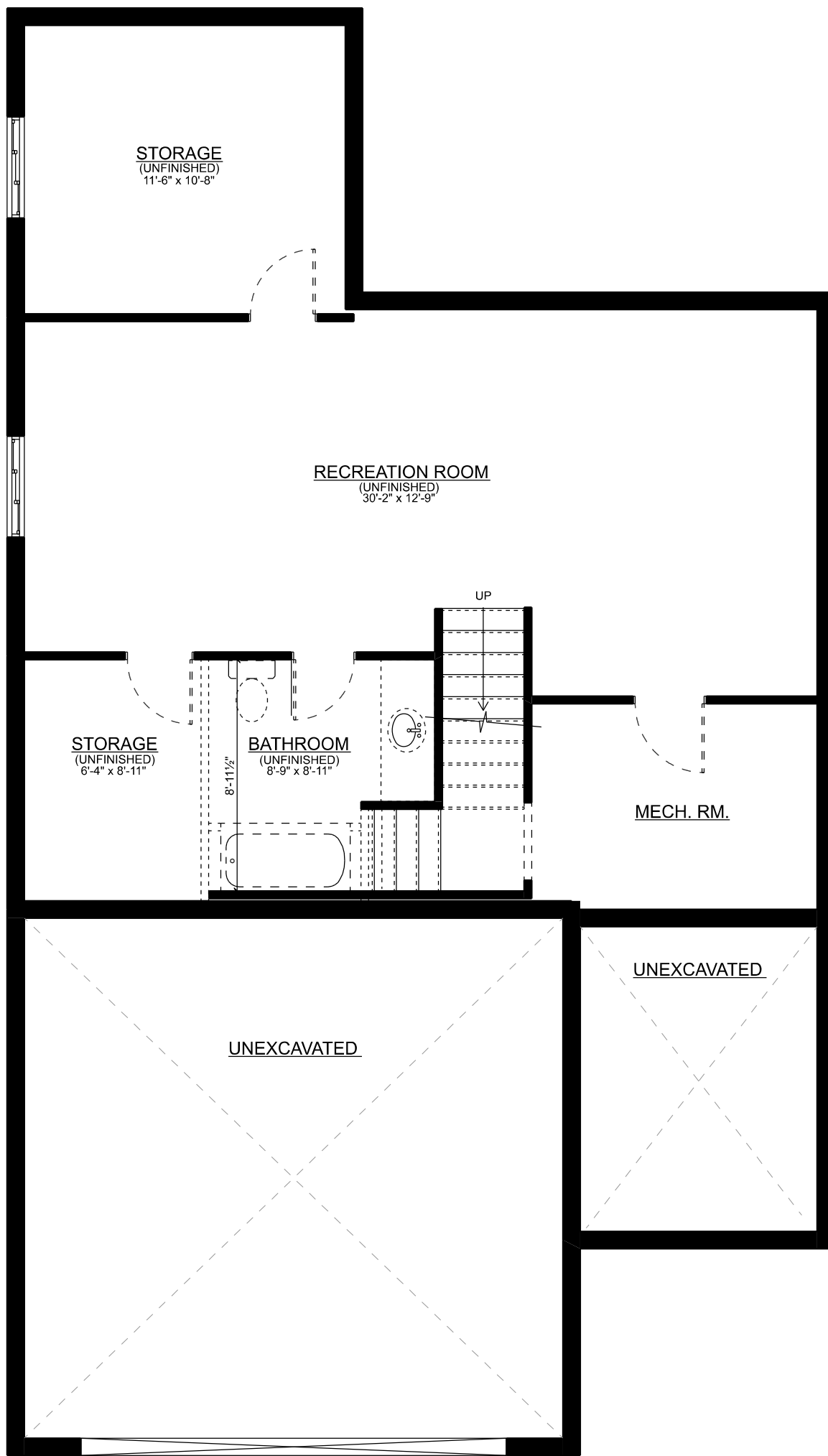


THE GRAND PRAIRIE

FRONT ELEVATION

May 2026

Sales: Ashley Bale
ph: 519-633-7119 ext. 103
email: ashley@mpcustomhomes.ca
www.mpcustomhomes.ca

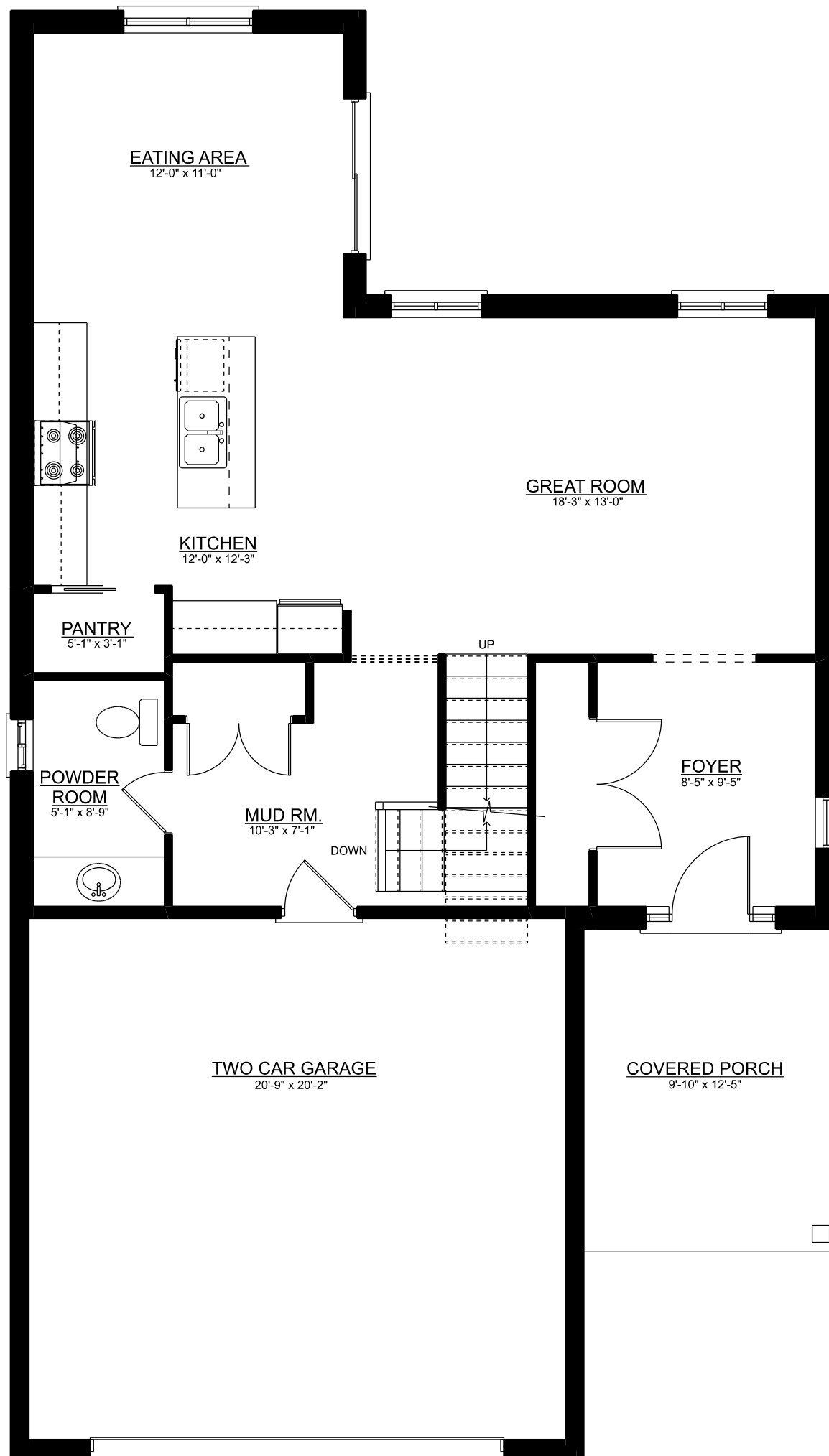


THE GRAND PRAIRIE

BASEMENT PLAN - APPROX. 675 SQ.FT.

May 2026

Sales: Ashley Bale
 ph: 519-633-7119 ext. 103
 email: ashley@mpcustomhomes.ca
 www.mpcustomhomes.ca

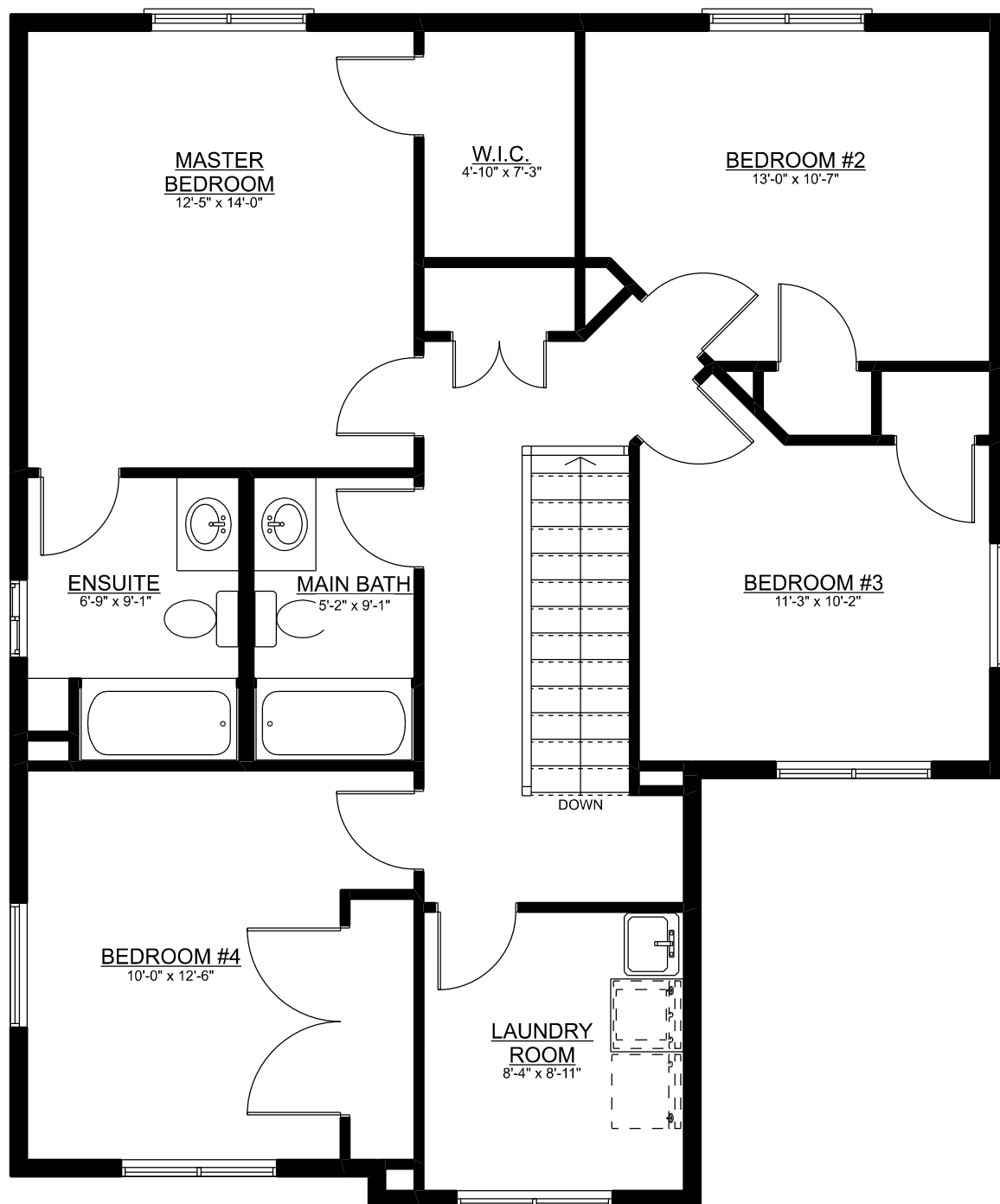


THE GRAND PRAIRIE

MAIN FLOOR PLAN - APPROX. 928 SQ.FT.

Apr. 2026

Sales: Ashley Bale
 ph: 519-633-7119 ext. 103
 email: ashley@mpcustomhomes.ca
 www.mpcustomhomes.ca



THE GRAND PRAIRIE

SECOND FLOOR PLAN - APPROX. 1,080 SQ.FT.

Apr. 2026

Sales: Ashley Bale
 ph: 519-633-7119 ext. 103
 email: ashley@mpcustomhomes.ca
 www.mpcustomhomes.ca