

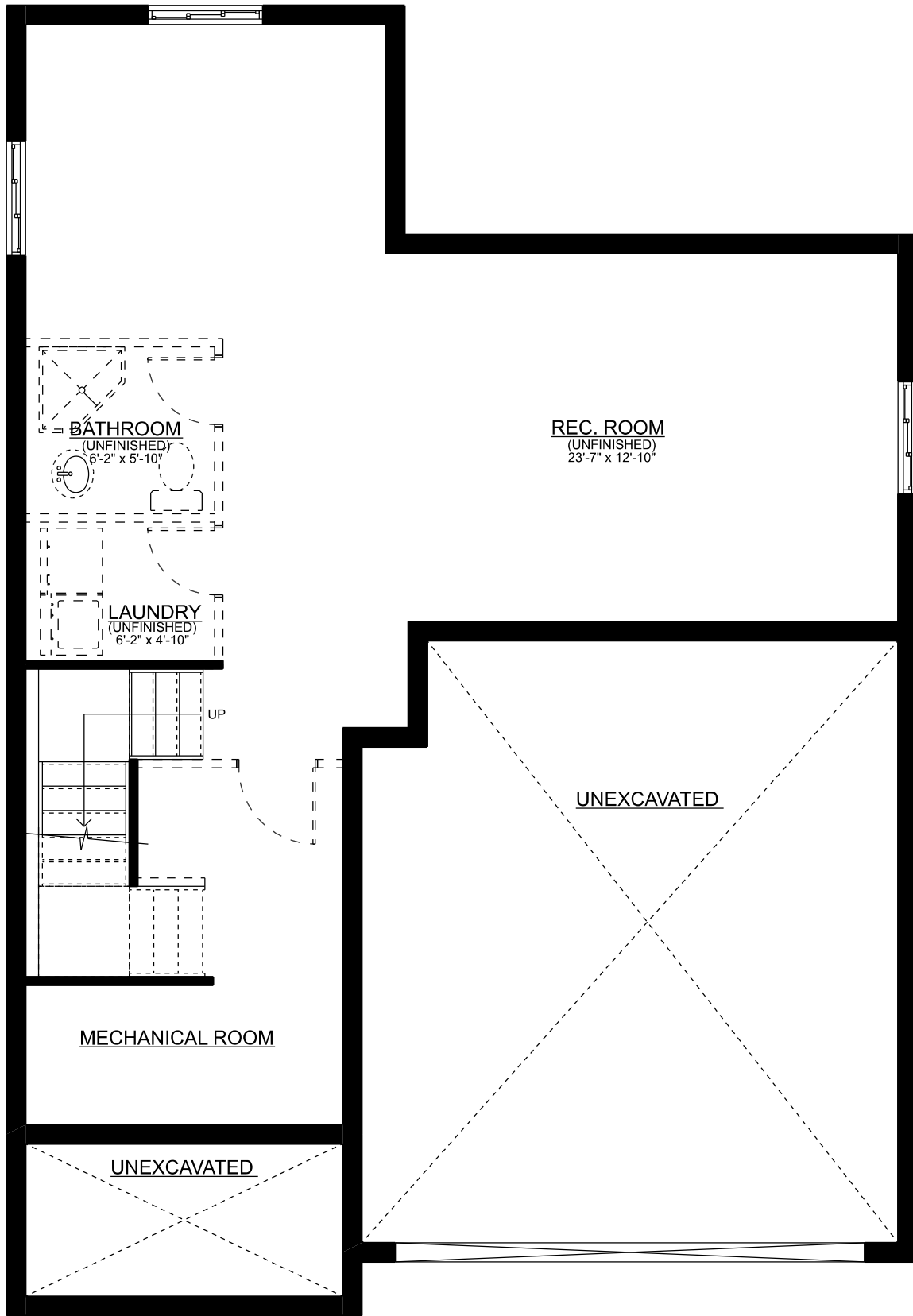


# THE BRIARWOOD

## FRONT ELEVATION

Mar. 2026

Sales: Ashley Bale  
ph: 519-633-7119 ext. 103  
email: [ashley@mpcustomhomes.ca](mailto:ashley@mpcustomhomes.ca)  
[www.mpcustomhomes.ca](http://www.mpcustomhomes.ca)

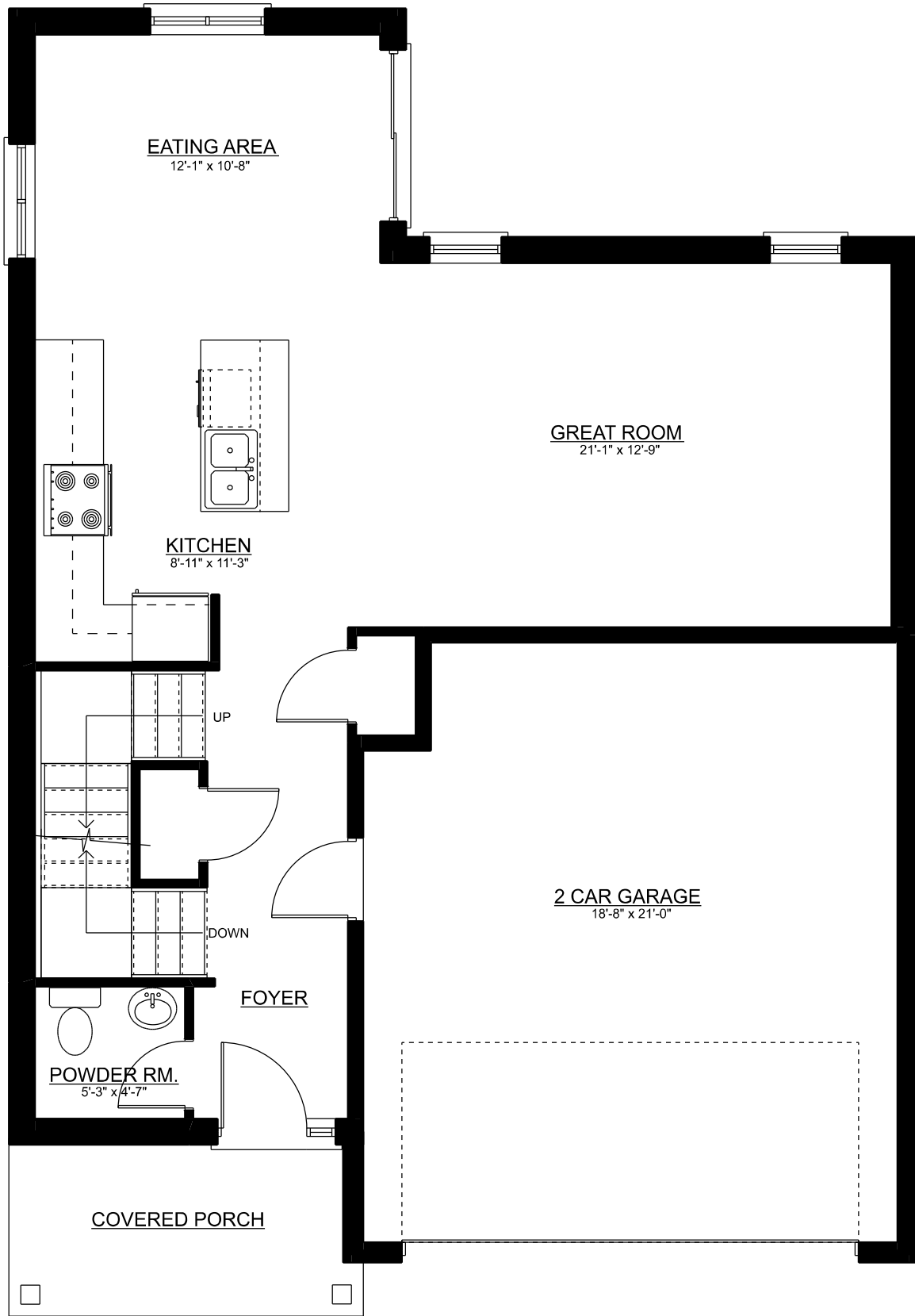


# THE BRIARWOOD

BASEMENT PLAN - APPROX. 639 SQ.FT.

Mar. 2026

Sales: Ashley Bale  
 ph: 519-633-7119 ext. 103  
 email: ashley@mpcustomhomes.ca  
 www.mpcustomhomes.ca

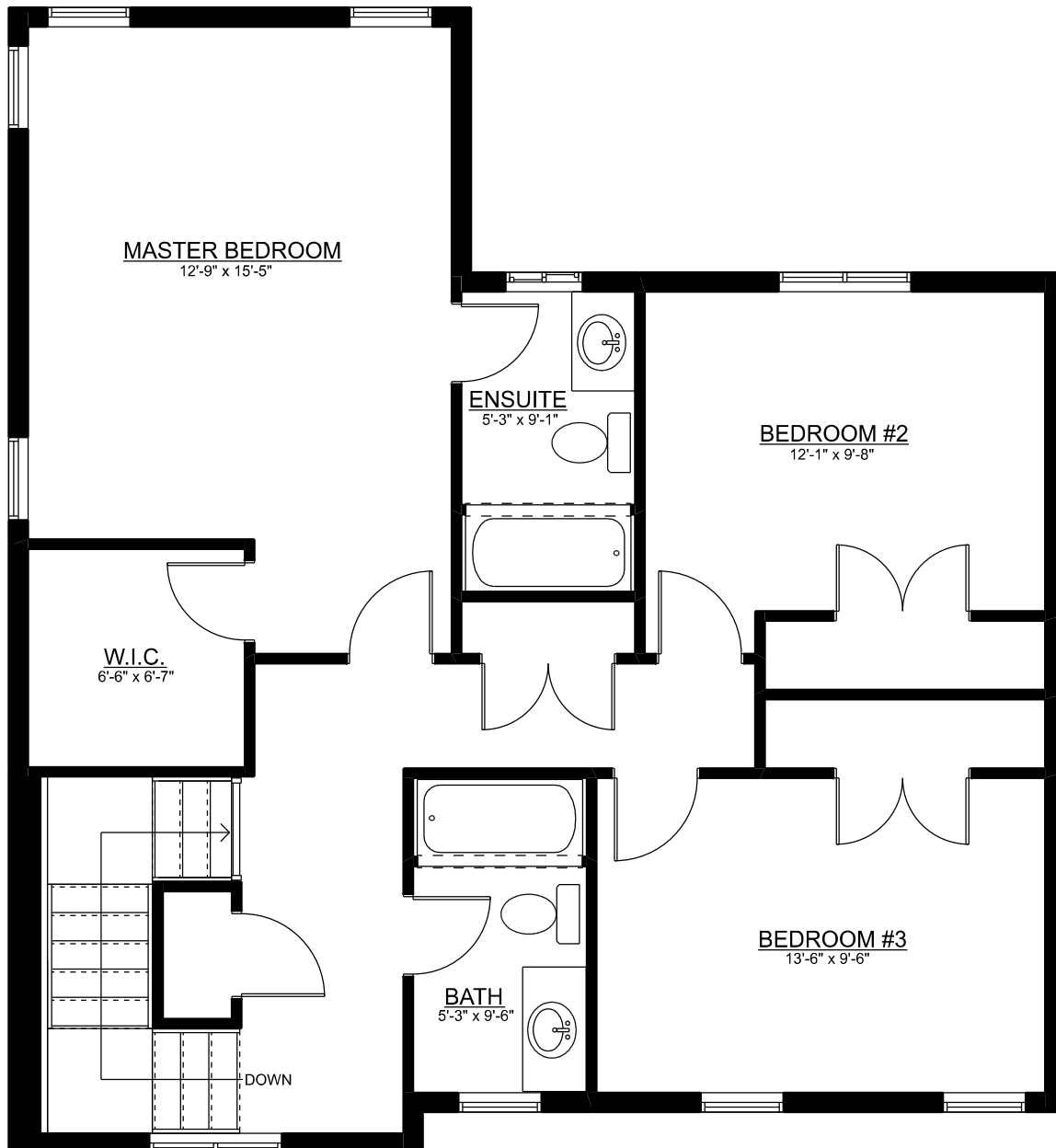


# THE BRIARWOOD

MAIN FLOOR PLAN - APPROX. 793 SQ.FT.

Mar. 2026

Sales: Ashley Bale  
 ph: 519-633-7119 ext. 103  
 email: ashley@mpcustomhomes.ca  
 www.mpcustomhomes.ca



# THE BRIARWOOD

SECOND FLOOR PLAN - APPROX. 935 SQ.FT.

Mar. 2026

Sales: Ashley Bale  
 ph: 519-633-7119 ext. 103  
 email: ashley@mpcustomhomes.ca  
 www.mpcustomhomes.ca