

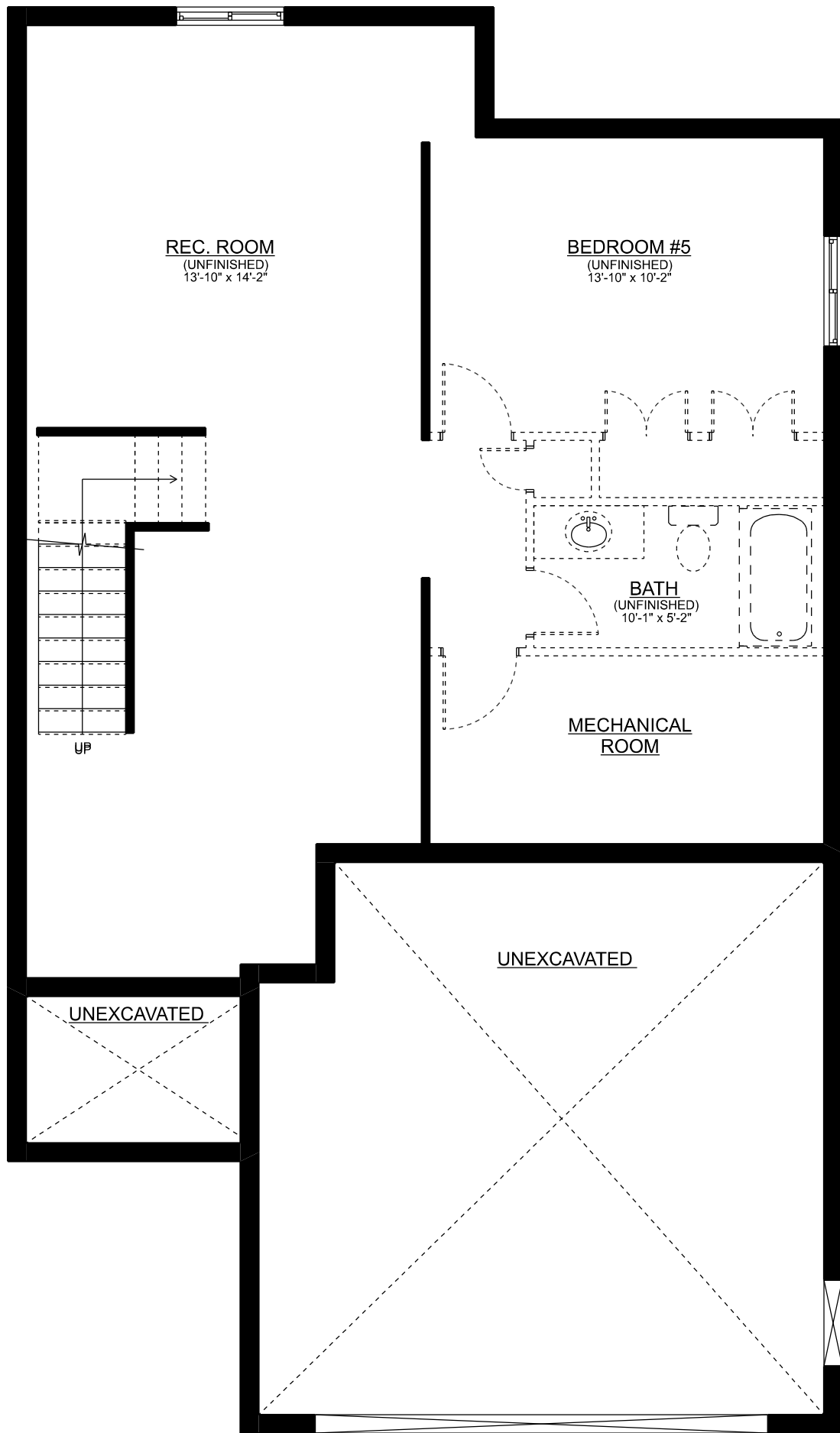


THE HAVENWOOD

FRONT ELEVATION

Mar. 2026

Sales: Ashley Bale
ph: 519-633-7119 ext. 103
email: ashley@mpcustomhomes.ca
www.mpcustomhomes.ca

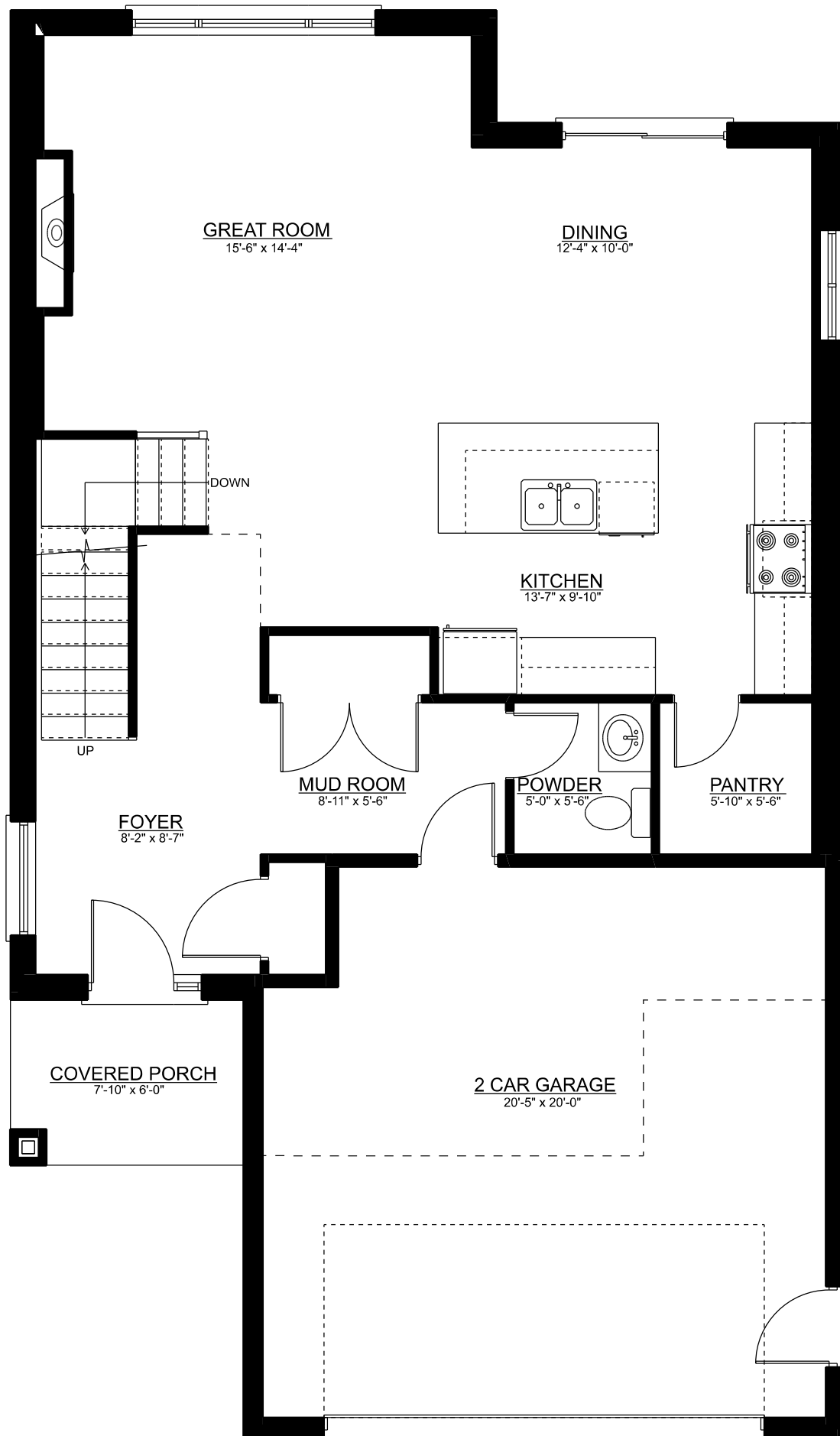


THE HAVENWOOD

BASEMENT PLAN - APPROX. 757 SQ.FT.

Mar. 2026

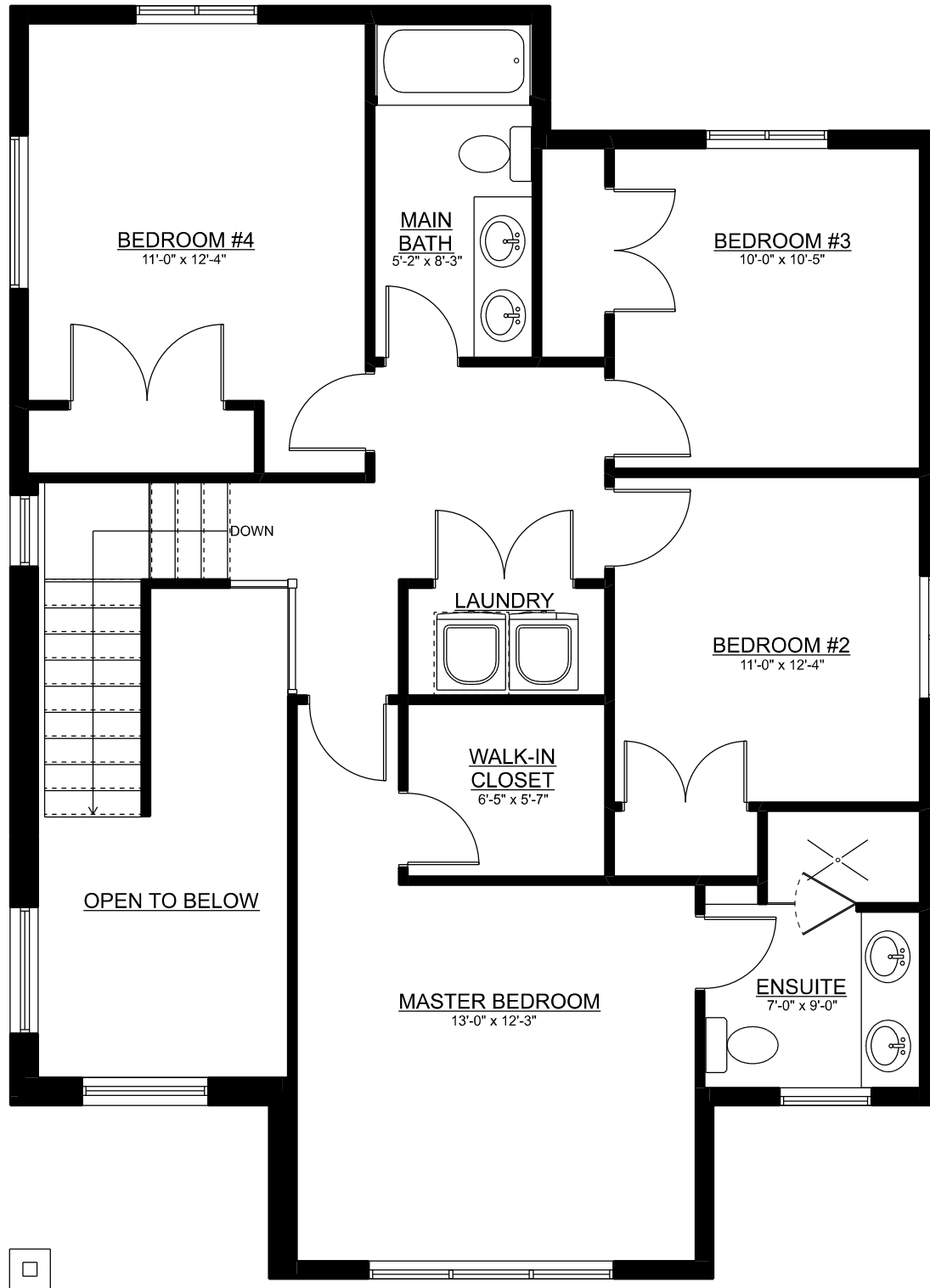
Sales: Ashley Bale
 ph: 519-633-7119 ext. 103
 email: ashley@mpcustomhomes.ca
 www.mpcustomhomes.ca



THE HAVENWOOD

MAIN FLOOR PLAN - APPROX. 949 SQ.FT.
 Mar. 2026

Sales: Ashley Bale
 ph: 519-633-7119 ext. 103
 email: ashley@mpcustomhomes.ca
 www.mpcustomhomes.ca



THE HAVENWOOD

SECOND FLOOR PLAN - APPROX. 1,121 SQ.FT.

Mar. 2026

Sales: Ashley Bale
 ph: 519-633-7119 ext. 103
 email: ashley@mpcustomhomes.ca
 www.mpcustomhomes.ca