

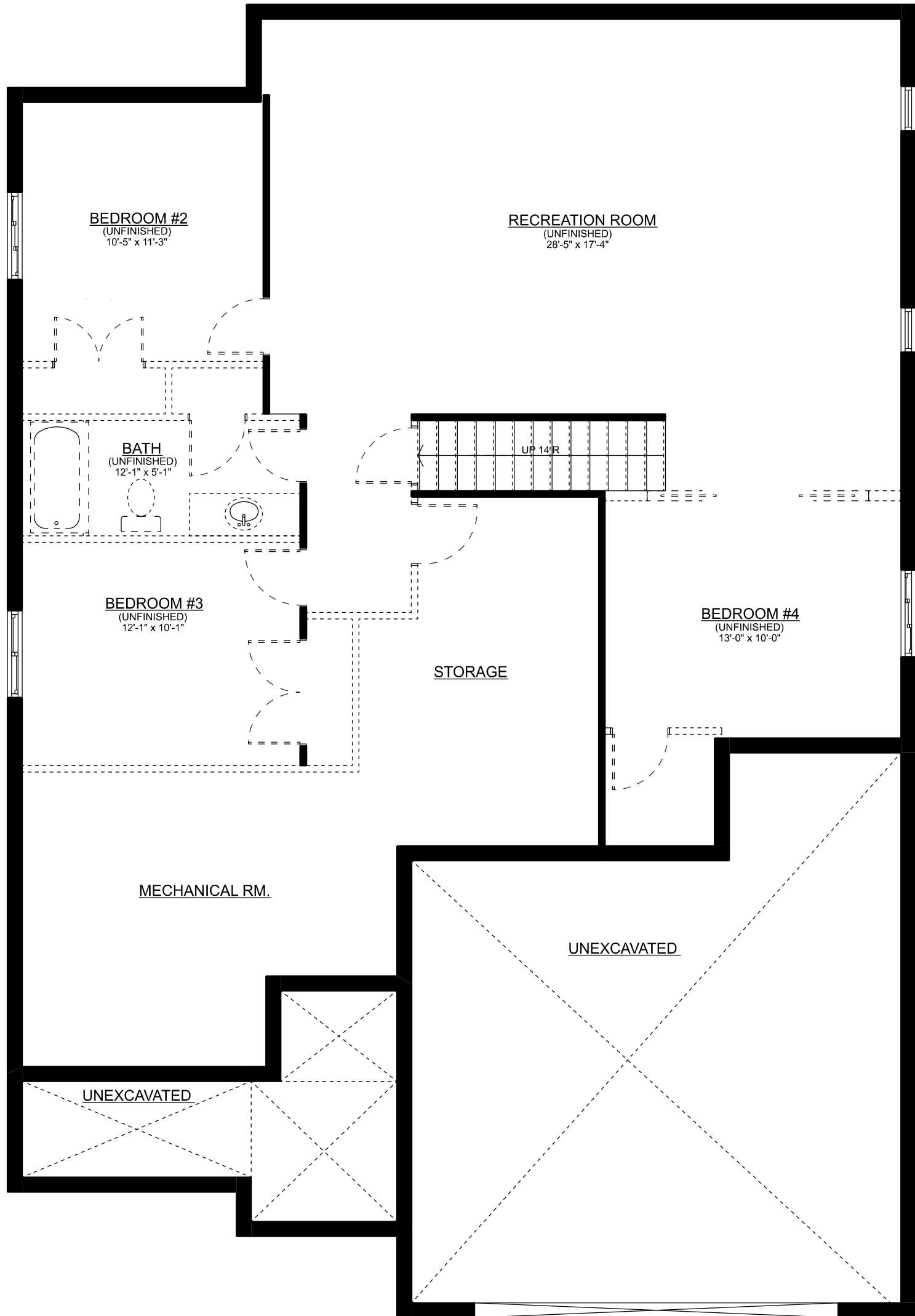


THE ROSSEAU II

FRONT ELEVATION

Mar. 2026

Sales: Ashley Bale
ph: 519-633-7119 ext. 103
email: ashley@mpcustomhomes.ca
www.mpcustomhomes.ca

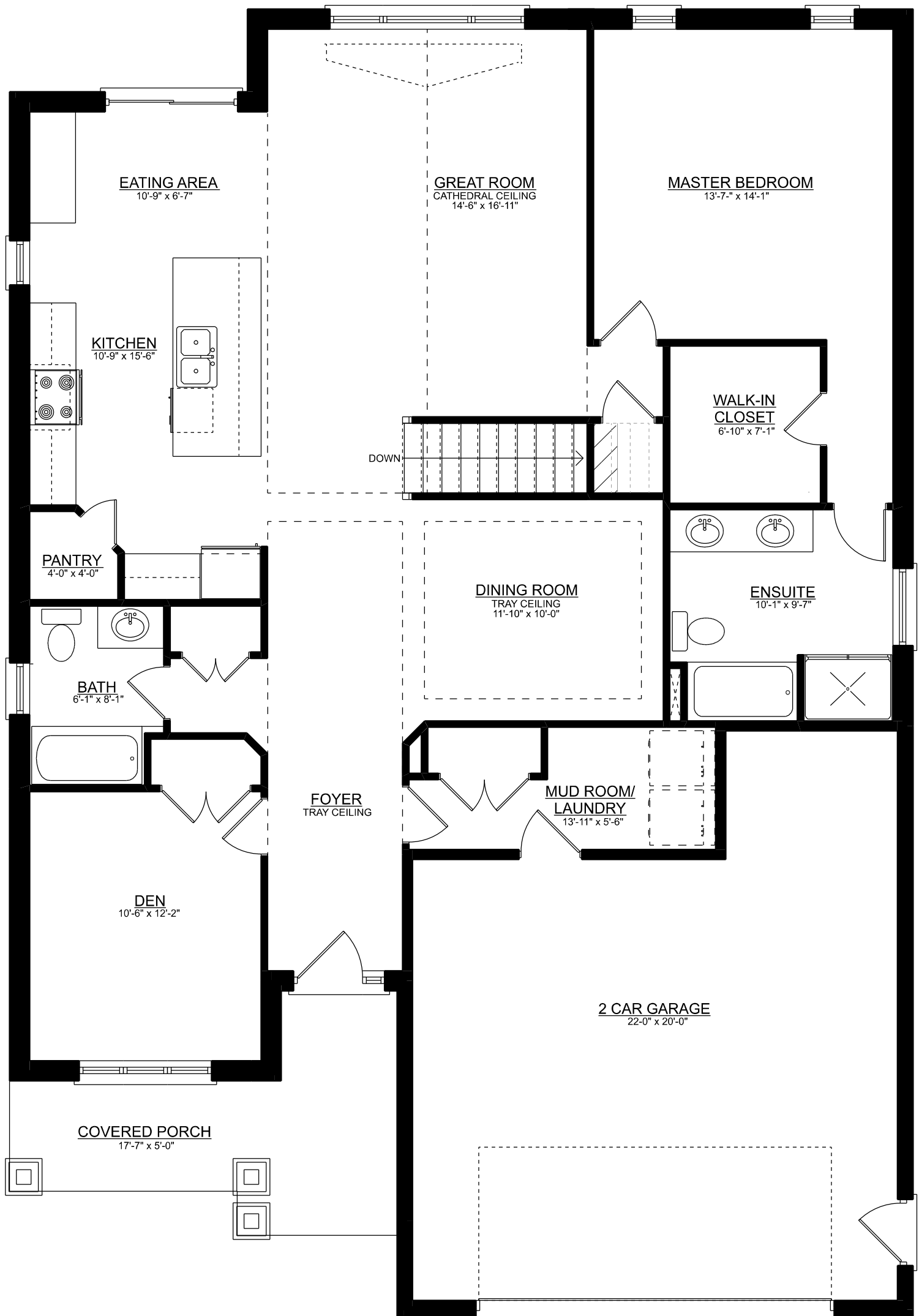


THE ROSSEAU II

BASEMENT PLAN - APPROX. 1,177 SQ.FT.

Mar. 2026

Sales: Ashley Bale
 ph: 519-633-7119 ext. 103
 email: ashley@mpcustomhomes.ca
 www.mpcustomhomes.ca



THE ROSSEAU II

MAIN FLOOR PLAN - APPROX. 1,651 SQ.FT.

Mar. 2026

Sales: Ashley Bale
 ph: 519-633-7119 ext. 103
 email: ashley@mpcustomhomes.ca
 www.mpcustomhomes.ca