

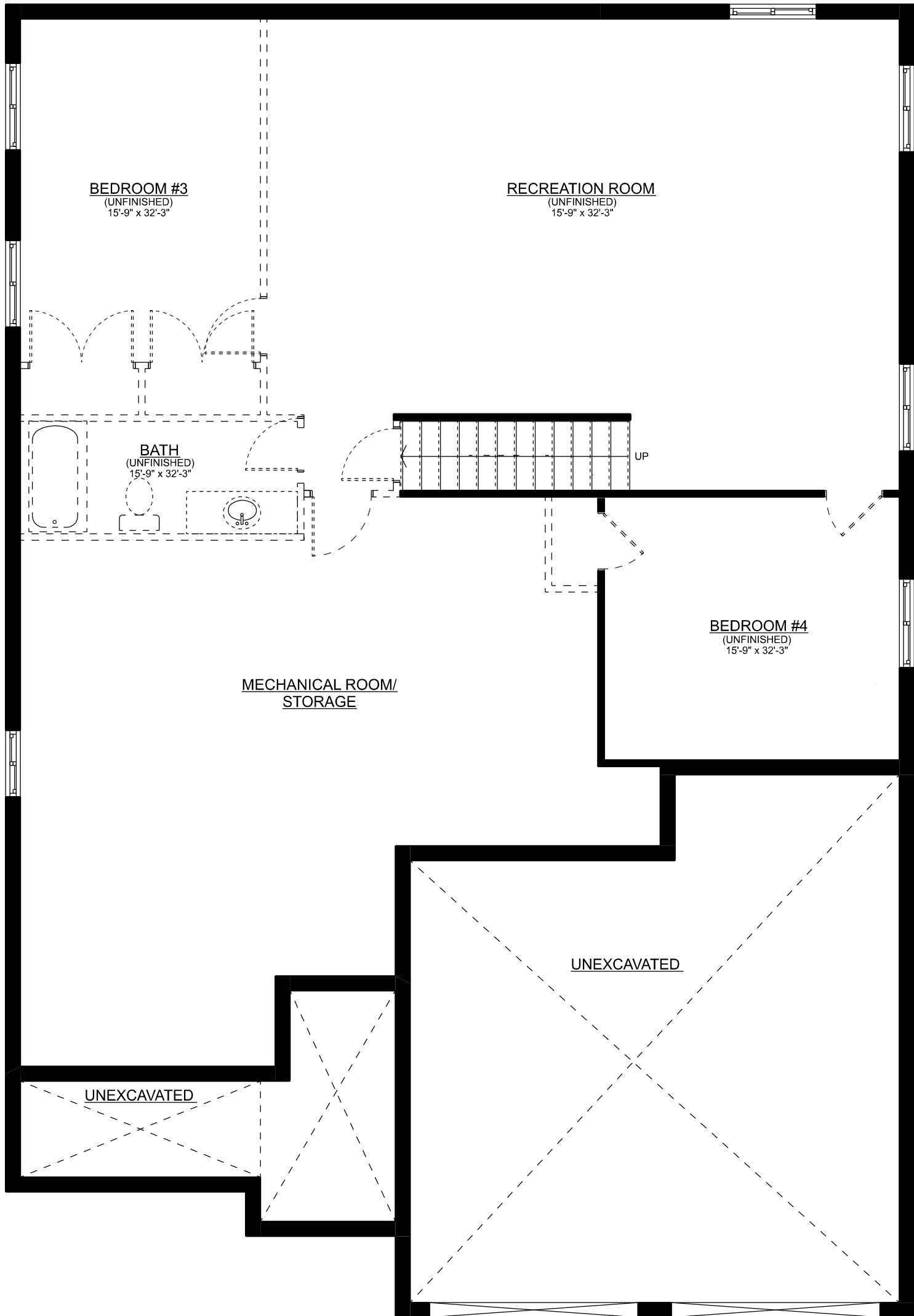


# THE ROSSEAU III

## FRONT ELEVATION

Mar. 2026

Sales: Ashley Bale  
ph: 519-633-7119 ext. 103  
email: [ashley@mpcustomhomes.ca](mailto:ashley@mpcustomhomes.ca)  
[www.mpcustomhomes.ca](http://www.mpcustomhomes.ca)

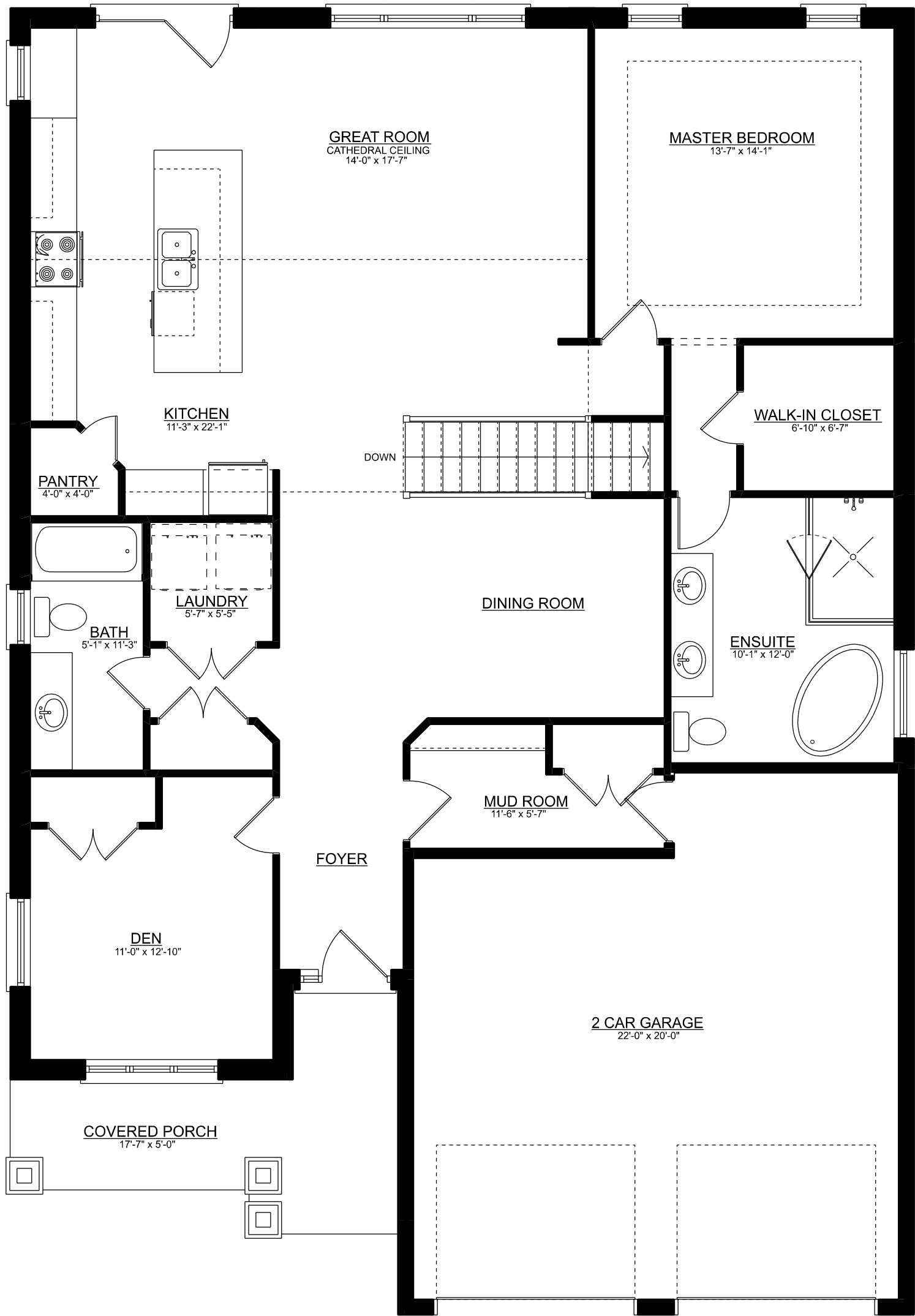


# THE ROSSEAU III

**BASEMENT PLAN - APPROX. 1,041 SQ.FT.**

Mar. 2026

Sales: Ashley Bale  
 ph: 519-633-7119 ext. 103  
 email: ashley@mpcustomhomes.ca  
 www.mpcustomhomes.ca



# THE ROSSEAU III

MAIN FLOOR PLAN - APPROX. 1,701 SQ.FT.

Mar. 2026

Sales: Ashley Bale  
 ph: 519-633-7119 ext. 103  
 email: ashley@mpcustomhomes.ca  
 www.mpcustomhomes.ca