

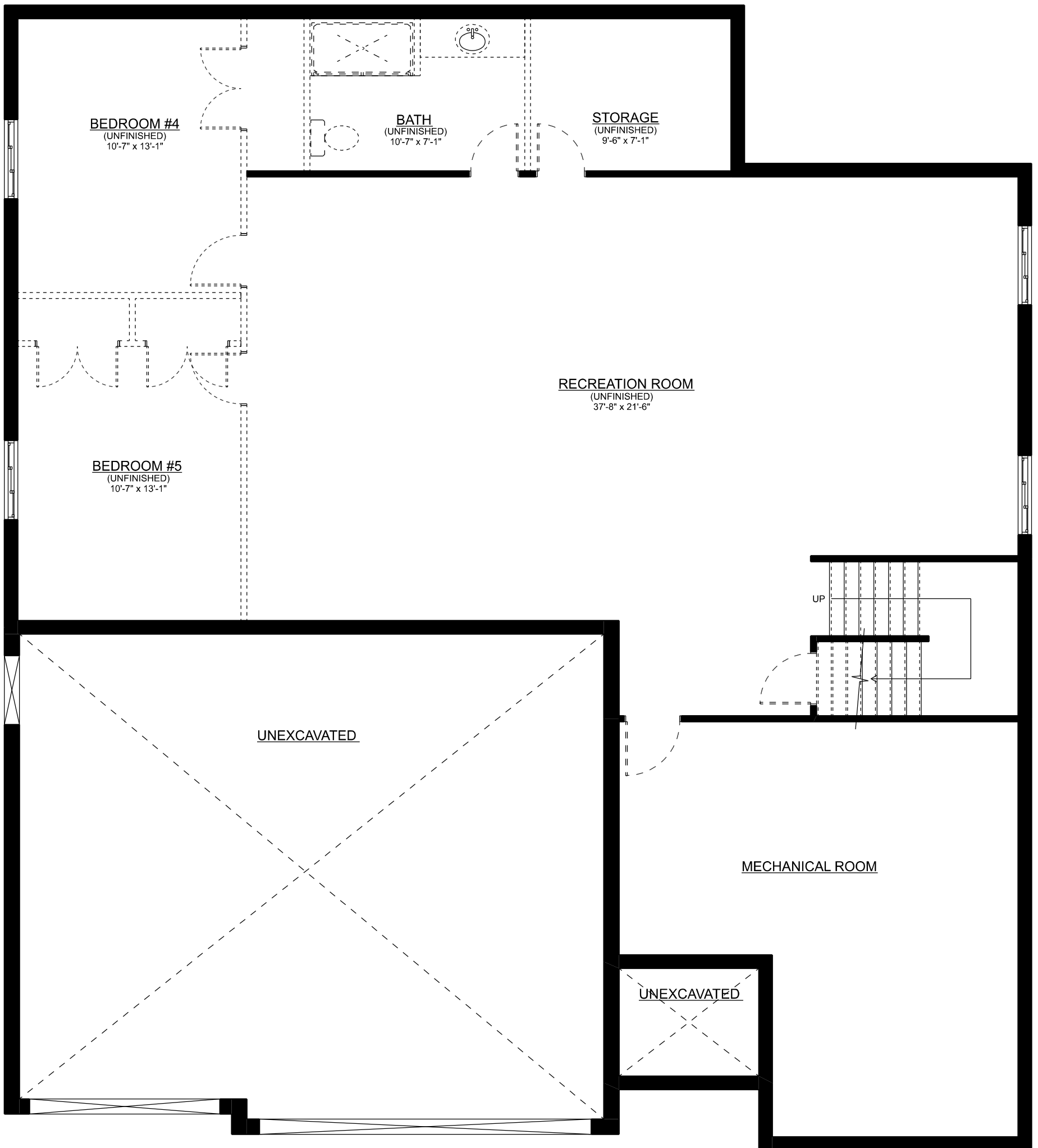


THE SILVERGROVE

FRONT ELEVATION

Apr. 2026

Sales: Ashley Bale
ph: 519-633-7119 ext. 103
email: ashley@mpcustomhomes.ca
www.mpcustomhomes.ca



THE SILVERGROVE

BASEMENT PLAN - APPROX. 1,456 SQ.FT.

June 2026

Sales: Ashley Bale
 ph: 519-633-7119 ext. 103
 email: ashley@mpcustomhomes.ca
 www.mpcustomhomes.ca



THE SILVERGROVE

MAIN FLOOR PLAN - APPROX. 1,946 SQ.FT.

June 2026

Sales: Ashley Bale
 ph: 519-633-7119 ext. 103
 email: ashley@mpcustomhomes.ca
 www.mpcustomhomes.ca



THE SILVERGROVE

SECOND FL. PLAN - APPROX. 1,761 SQ.FT.

June 2026

Sales: Ashley Bale
 ph: 519-633-7119 ext. 103
 email: ashley@mpcustomhomes.ca
 www.mpcustomhomes.ca