

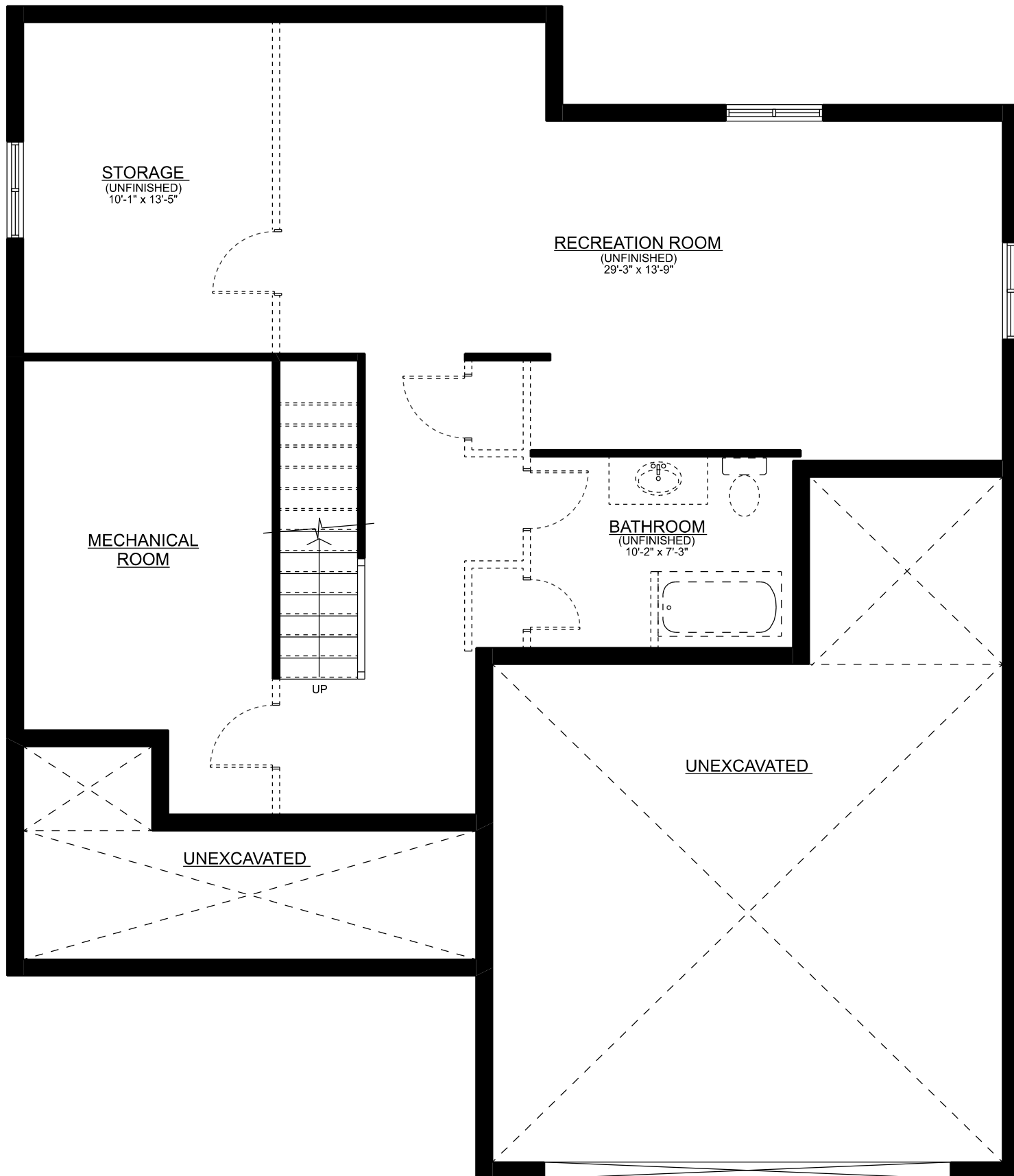


THE CAMBRIDGE

FRONT ELEVATION

Apr. 2026

Sales: Ashley Bale
ph: 519-633-7119 ext. 103
email: ashley@mpcustomhomes.ca
www.mpcustomhomes.ca

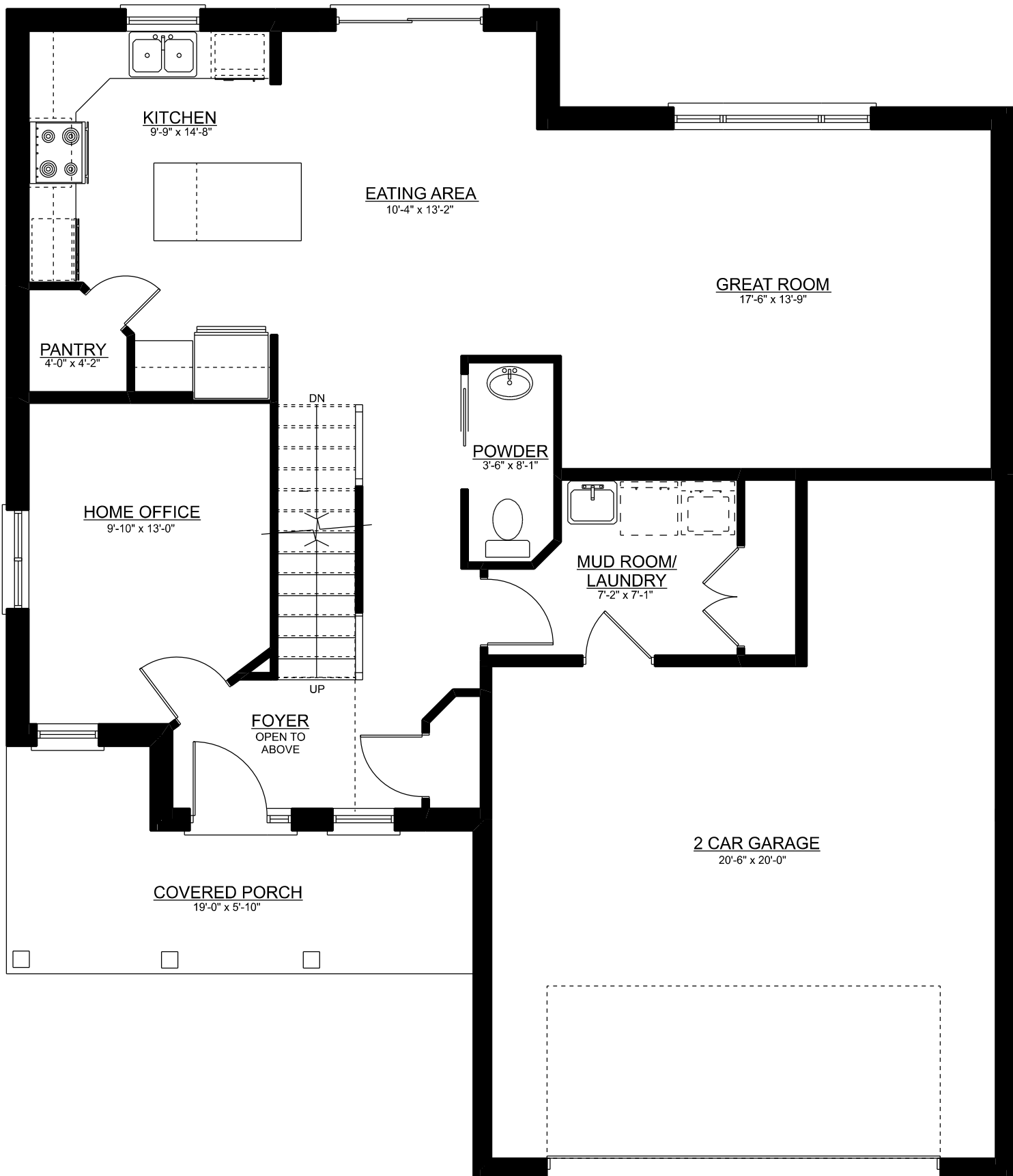


THE CAMBRIDGE

BASEMENT PLAN - APPROX. 797 SQ.FT.

Apr. 2026

Sales: Ashley Bale
 ph: 519-633-7119 ext. 103
 email: ashley@mpcustomhomes.ca
 www.mpcustomhomes.ca

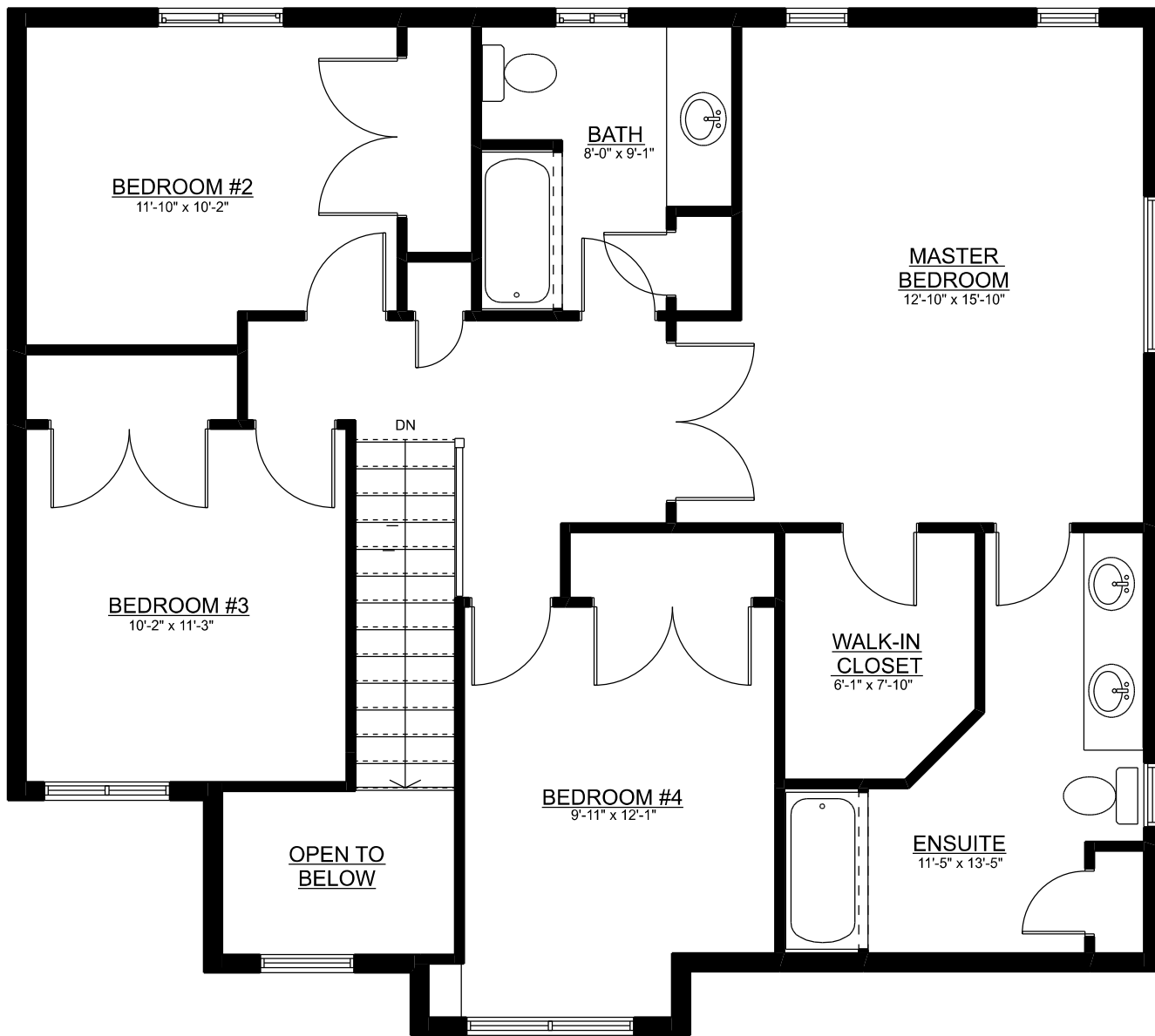


THE CAMBRIDGE

MAIN FLOOR PLAN - APPROX. 1,072 SQ.FT.

Apr. 2026

Sales: Ashley Bale
 ph: 519-633-7119 ext. 103
 email: ashley@mpcustomhomes.ca
 www.mpcustomhomes.ca



THE CAMBRIDGE

SECOND FLOOR PLAN - APPROX. 1,114 SQ.FT.

Apr. 2026

Sales: Ashley Bale
 ph: 519-633-7119 ext. 103
 email: ashley@mpcustomhomes.ca
 www.mpcustomhomes.ca